

THE MOST NATURAL NOISE CONTROL



## ECO<sup>®</sup>iso SPL<sup>®</sup>

JOCaUI<sup>®</sup>

### soundproofing layer

- 100% CORK
- 100 Kg/m<sup>3</sup> DENSITY
- UNLIMITED DURABILITY
- 100% NATURAL MATERIAL
- EXCELLENT THERMAL PROPERTIES
- EXCELLENT ANTI-VIBRATING PROPERTIES
- APPLICABLE ON WALLS, CEILINGS AND FLOORS
- APPLICABLE AS REVETMENT OR AS INSULATION MATERIAL



# ECOiso<sup>®</sup> SPL<sup>®</sup>

## soundproofing layer

It is definitely the oldest and noblest raw material used for Acoustic and Thermal Insulation. Cork, a 100% natural product, is par excellence the best material for soundproofing. This agglomerate is made of selected raw material originating from self-sustainable cork-oak stands, which are more than 100 years old, in the Portuguese territory. The process to manufacture the agglomerate only uses cork and steam, no other additives. The density is controlled at 110kg/m<sup>3</sup>. It comes in 1000 x 500mm plates and its thickness varies between 20 and 100mm. It may be placed on the inner layers of walls, ceilings or floors or may be placed on the outer layer as a final finishing. This material is simply beautiful, exotic and very attractive and it may certainly make the difference in your space. Control noise like never before!

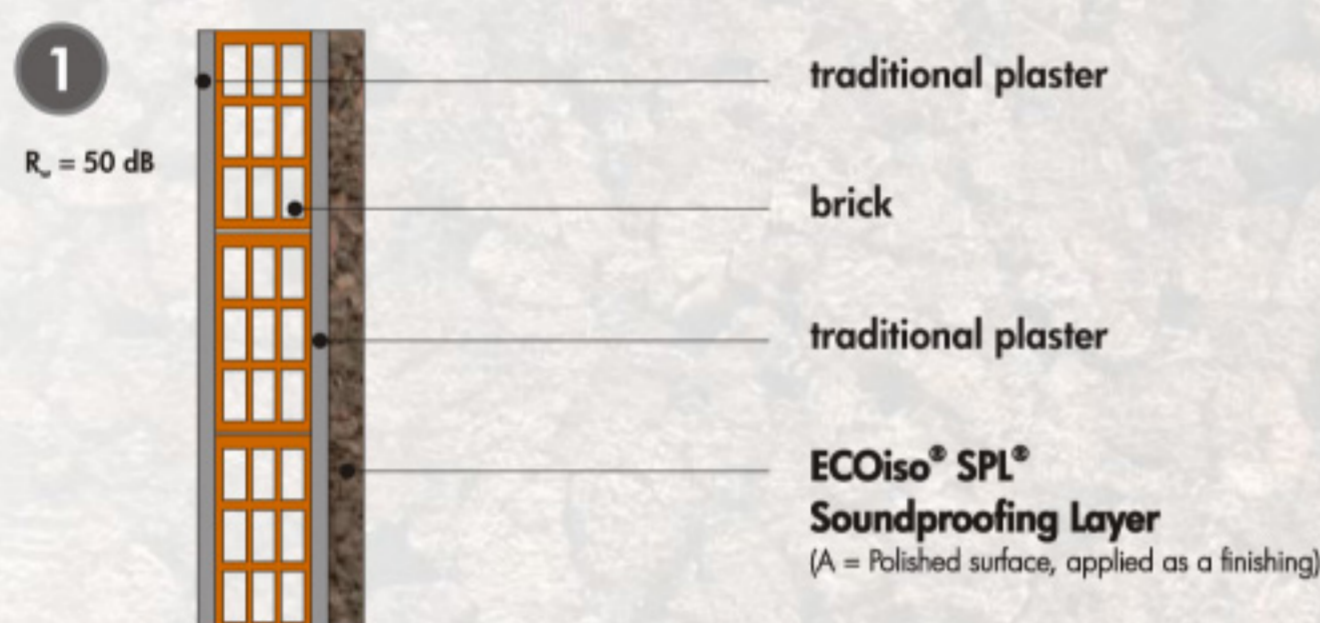
It is definitely the oldest and noblest raw material used for Acoustic and Thermal Insulation. Cork, a 100% natural product, is par excellence the best material for soundproofing.

This agglomerate is made of selected raw material originating from self-sustainable cork-oak stands, which are more than 100 years old, in the Portuguese territory. The process to manufacture the agglomerate only uses cork and steam, no other additives. The density is controlled at 110kg/m<sup>3</sup>.

It comes in 1000 x 500mm plates and its thickness varies between

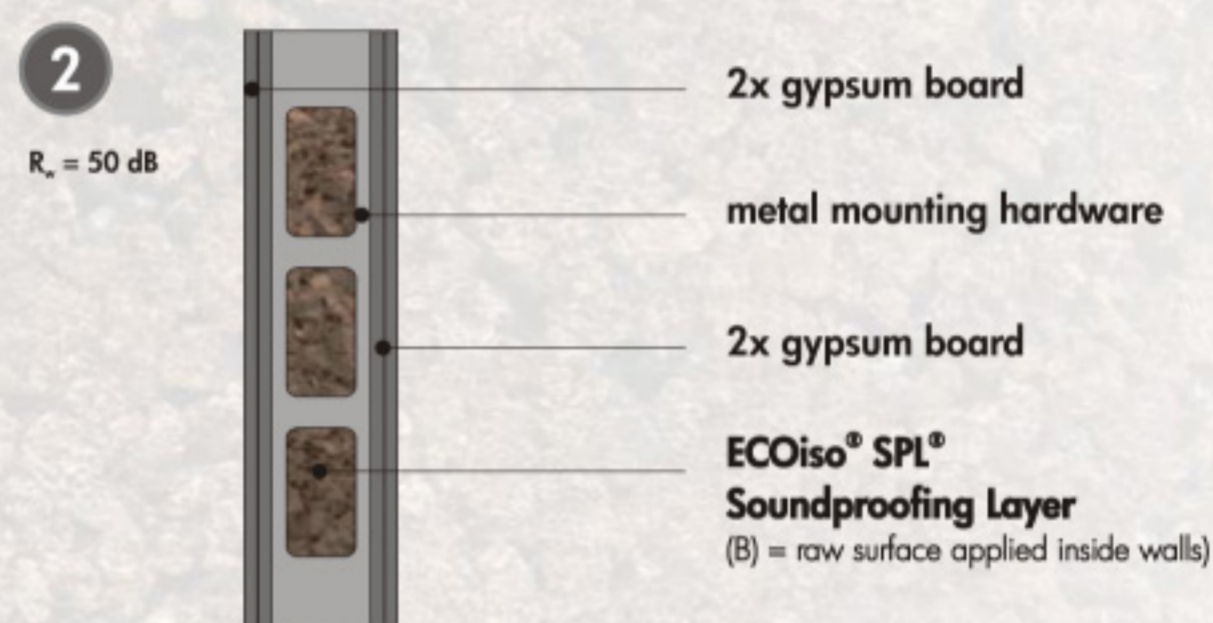
### REINFORCEMENT INSULATION REVETMENT

13mm plaster + 110mm ceramic brick + 13mm plaster + ECOiso<sup>®</sup> SPL<sup>®</sup>60mm



### INSIDE A PARTITION WALL

2x13mm gypsum board + ECOiso<sup>®</sup> SPL<sup>®</sup>60mm on metal frame + 2x13mm gypsum board



### INSULATION AND THERMAL RESISTANCE VALUES

	INSULATION VALUES R <sub>w</sub> (1)	THERMAL RESISTANCE R <sub>t</sub> (m <sup>2</sup> .°C/W)
<b>1</b> 20mm ECOiso <sup>®</sup> SPL <sup>®</sup>	R <sub>w</sub> = 39 dB	0,50
40mm ECOiso <sup>®</sup> SPL <sup>®</sup>	R <sub>w</sub> = 44 dB	1,00
60mm ECOiso <sup>®</sup> SPL <sup>®</sup>	R <sub>w</sub> = 50 dB	1,50
80mm ECOiso <sup>®</sup> SPL <sup>®</sup>	R <sub>w</sub> = 52 dB	2,00
100mm ECOiso <sup>®</sup> SPL <sup>®</sup>	R <sub>w</sub> = 54 dB	2,50

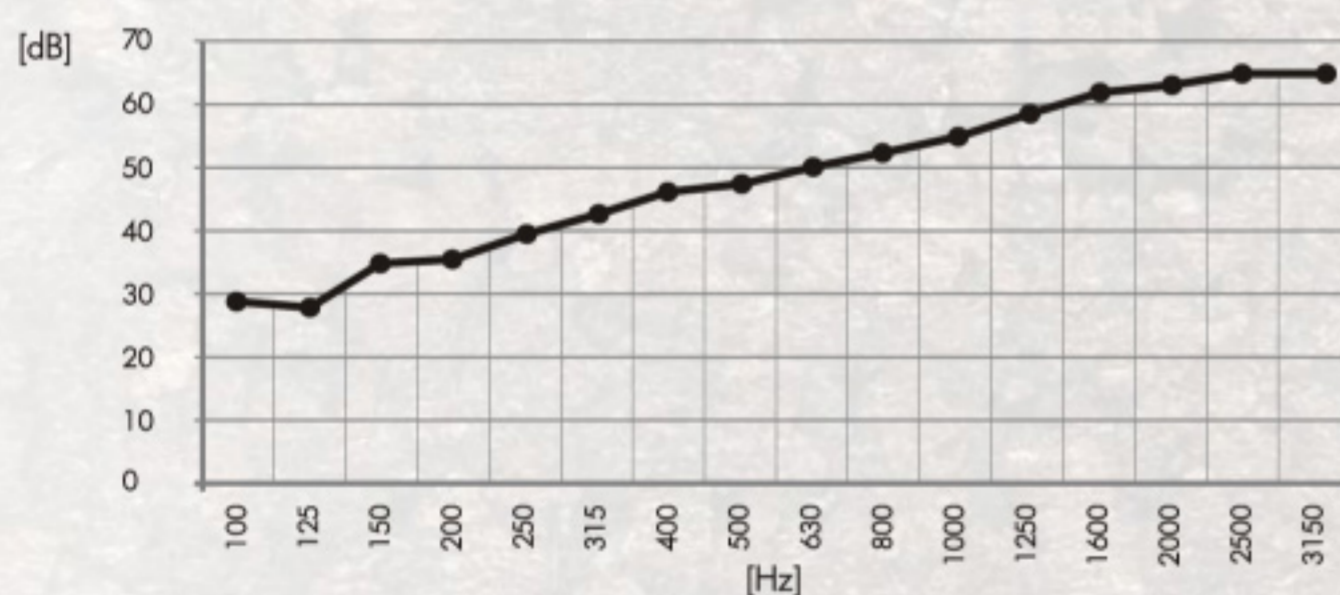
### INSULATION AND THERMAL RESISTANCE VALUES

	INSULATION VALUES R <sub>w</sub> (1)	THERMAL RESISTANCE R <sub>t</sub> (m <sup>2</sup> .°C/W)
<b>2</b> 40mm ECOiso <sup>®</sup> SPL <sup>®</sup>	R <sub>w</sub> = 44 dB	1,00
60mm ECOiso <sup>®</sup> SPL <sup>®</sup>	R <sub>w</sub> = 50 dB	1,50
80mm ECOiso <sup>®</sup> SPL <sup>®</sup>	R <sub>w</sub> = 53 dB	2,00
100mm ECOiso <sup>®</sup> SPL <sup>®</sup>	R <sub>w</sub> = 56 dB	2,50

(1) Laboratory Measurement of Sound Absorption Coefficient according to ISO 140-3 and ISO 354:2003

### SOUND INSULATION INDEX (dB/Hz)

13mm plaster + 110mm ceramic brick + 13mm plaster + ECOiso<sup>®</sup> SPL<sup>®</sup>60mm



### GENERAL FEATURES

ECOiso<sup>®</sup> SPL<sup>®</sup>

TECHNICAL FEATURES	STANDARD	LIMIT VALUES / TOLERANCES	CLASS
Apparent bulk density	NP EN 1602	< 130 kg/m <sup>3</sup>	---
Thermal conductivity coefficient	EN 12667	< 0,040 W/m.K (λ <sub>0</sub> )	---
Water content	EN 12105	< 8%	---
Water absorption	NP EN 1609	< 0,5 kg/m <sup>2</sup>	WS
Fire Class	NP ISO 11925-1	< 150 mm (h)	Euroclass E
	ETICS	---	B - s1,d0

### PACKAGE INFORMATION

A / B SIDES - ONE SIDE POLISHED AND ONE RAW	
Package Dimensions - 1000 x 500 x 300 mm	
REFERENCE / THICKNESS	NR. OF PLATES PER BOX
ECOiso <sup>®</sup> SPL20	15 plates per box
ECOiso <sup>®</sup> SPL40	7 plates per box
ECOiso <sup>®</sup> SPL60	5 plates per box
ECOiso <sup>®</sup> SPL80	3 plates per box
ECOiso <sup>®</sup> SPL100	3 plates per box

### PACKAGE INFORMATION

B / B SIDES - BOTH SIDES RAW	
Package Dimensions - 1000 x 500 x 300 mm	
REFERENCE / THICKNESS	NR. OF PLATES PER BOX
ECOiso <sup>®</sup> SPL40	7 plates per box
ECOiso <sup>®</sup> SPL60	5 plates per box
ECOiso <sup>®</sup> SPL80	3 plates per box
ECOiso <sup>®</sup> SPL100	3 plates per box

### MANUFACTURER



JOCAVI<sup>®</sup>, Acoustic Panels, Lda.  
 Centro Empresarial Lusoworld, Ed.22  
 Linhó - 2710-335 Sintra - Portugal  
 Phone: +351 21 9243097 - Fax: +351 219243098  
 www.jocavi.net - info@jocavi.net

### OFFICIAL DISTRIBUTOR